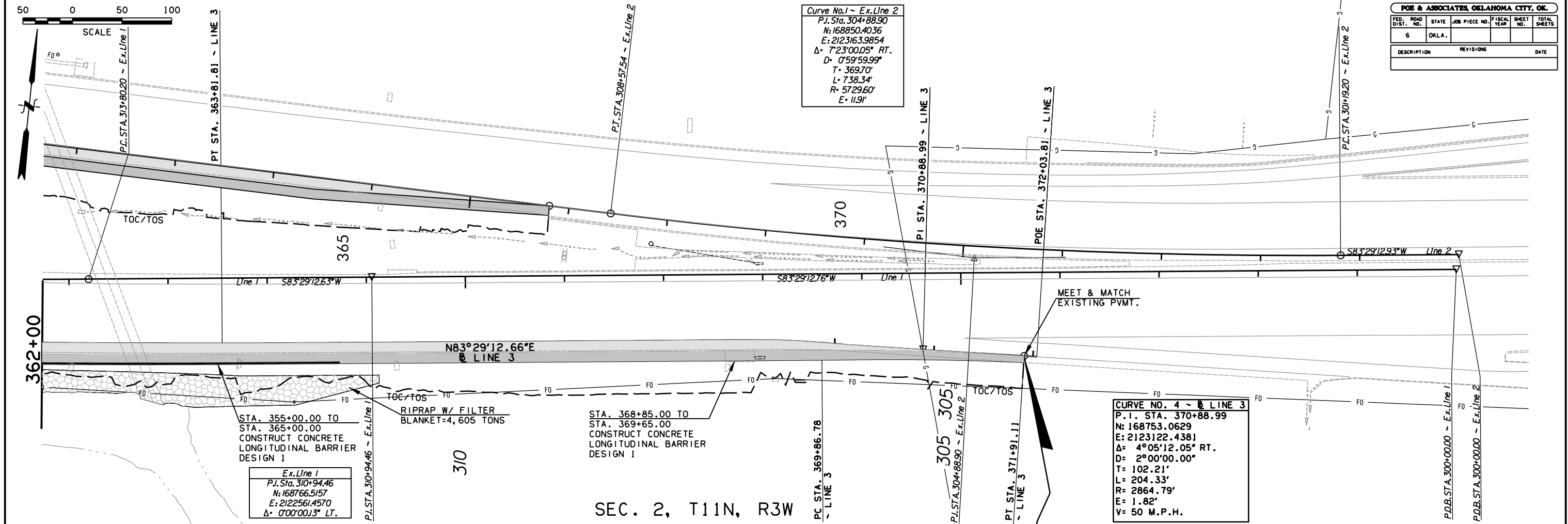
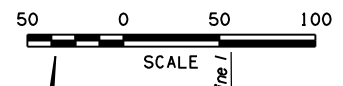


POB & ASSOCIATES, OKLAHOMA CITY, OK.					
FED. ROAD DIST. NO.	STATE	JOB PIECE NO.	FISCAL YEAR	SHEET NO.	TOTAL SHEETS
6	OKLA.				
DESCRIPTION		REVISIONS	DATE		

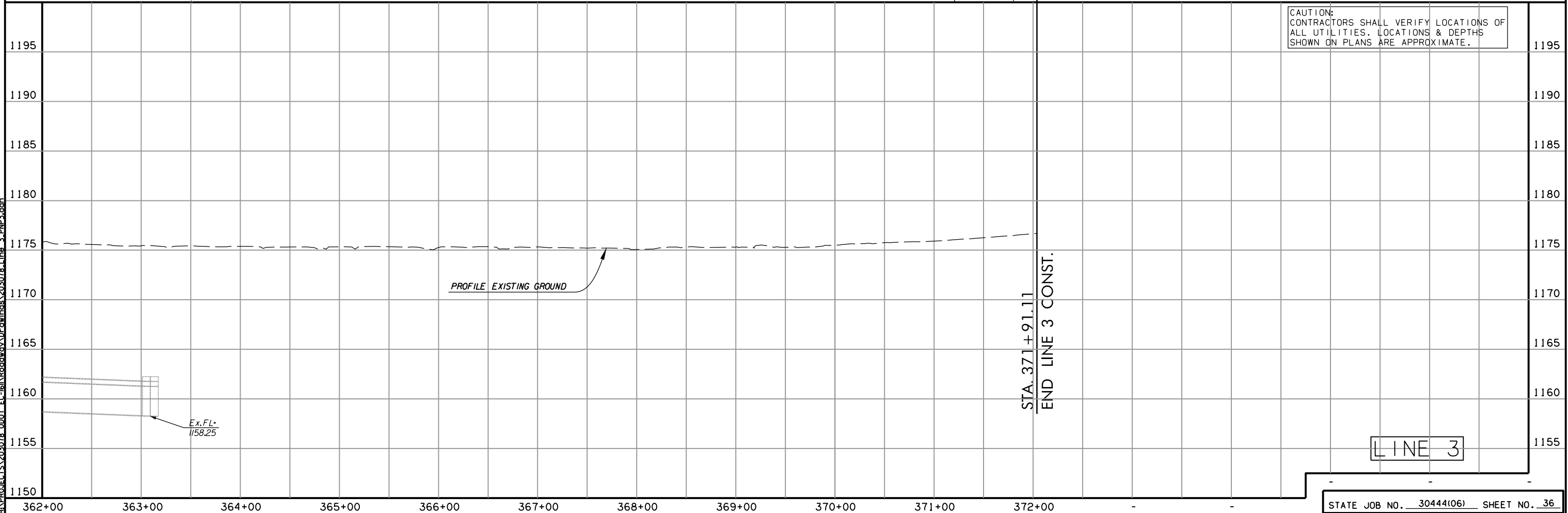
Curve No. 1 ~ Ex. Line 2
 P.I. STA. 304+88.90
 N: 168850.4036
 E: 2123163.9854
 Δ : 7°23'00.05" RT.
 D: 0°59'59.99"
 T: 369.70'
 L: 738.34'
 R: 5729.60'
 E: 11.91'

CURVE NO. 4 ~ Ex. Line 3
 P.I. STA. 370+88.99
 N: 168753.0629
 E: 2123122.4381
 Δ : 4°05'12.05" RT.
 D: 2°00'00.00"
 T: 102.21'
 L: 204.33'
 R: 2864.79'
 E: 1.82'
 V: 50 M.P.H.

Ex. Line 1
 P.I. STA. 310+94.46
 N: 168766.5157
 E: 2122561.4570
 Δ : 0°00'00.13" LT.



CAUTION: CONTRACTORS SHALL VERIFY LOCATIONS OF ALL UTILITIES. LOCATIONS & DEPTHS SHOWN ON PLANS ARE APPROXIMATE.



LINE 3

8/31/2017 2:33:11 PM H:\PROJECTS\203078_0001_EC-1611\Roadway\Drawings\203078_Line_3_PMP3.dwg